

Item # BEF 16-21-501, BEF Series Heavy Duty Metric Rod Ends

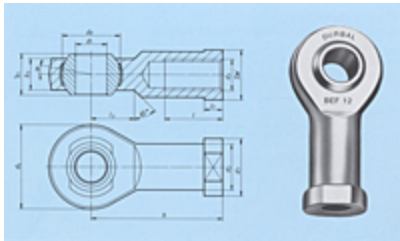
List Price -

QUOTE

Heavy-duty female thread rod ends with integral spherical plain bearing.

These heavy duty metric rod ends are available with rolling elements to provide medium to heavy load carrying at medium to high speeds. Excellent for shock loads. This series is:

- Female threaded
- Maintenance free
- Adapter sizes according to DIN 648, series K



Specifications

Type	BEF 16 SO
Thread Type	Right Hand Thread
(d ₁) Dimension	16 mm
(d ₂) Dimension	22 mm
(d ₃) Dimension	M16 x 1.5

(d₆) Dimension	42 mm
(d₇) Dimension	27 mm
(d₈) Dimension	28.52 mm
(b₁) Dimension	21 mm
(b₃) Dimension	15 mm
(h) Dimension	64 mm
(l) Dimension	28 mm
(l₂) Dimension	22 mm
(l₁) Dimension	8 mm
sw	22 mm
α_1	15.5 °
α_2	8.5 °
Weight	0.233 kg
Basic Dynamic Load Rating	22410 N
Basic Static Load Rating	56020 N
Rod End Housing	Forged steel, tempered, surface galvanized
Joint Ball	Ball bearing steel, hardened and ground, surface super finished and chromium plated
Available Race Type	Glass compound Nylon Teflon